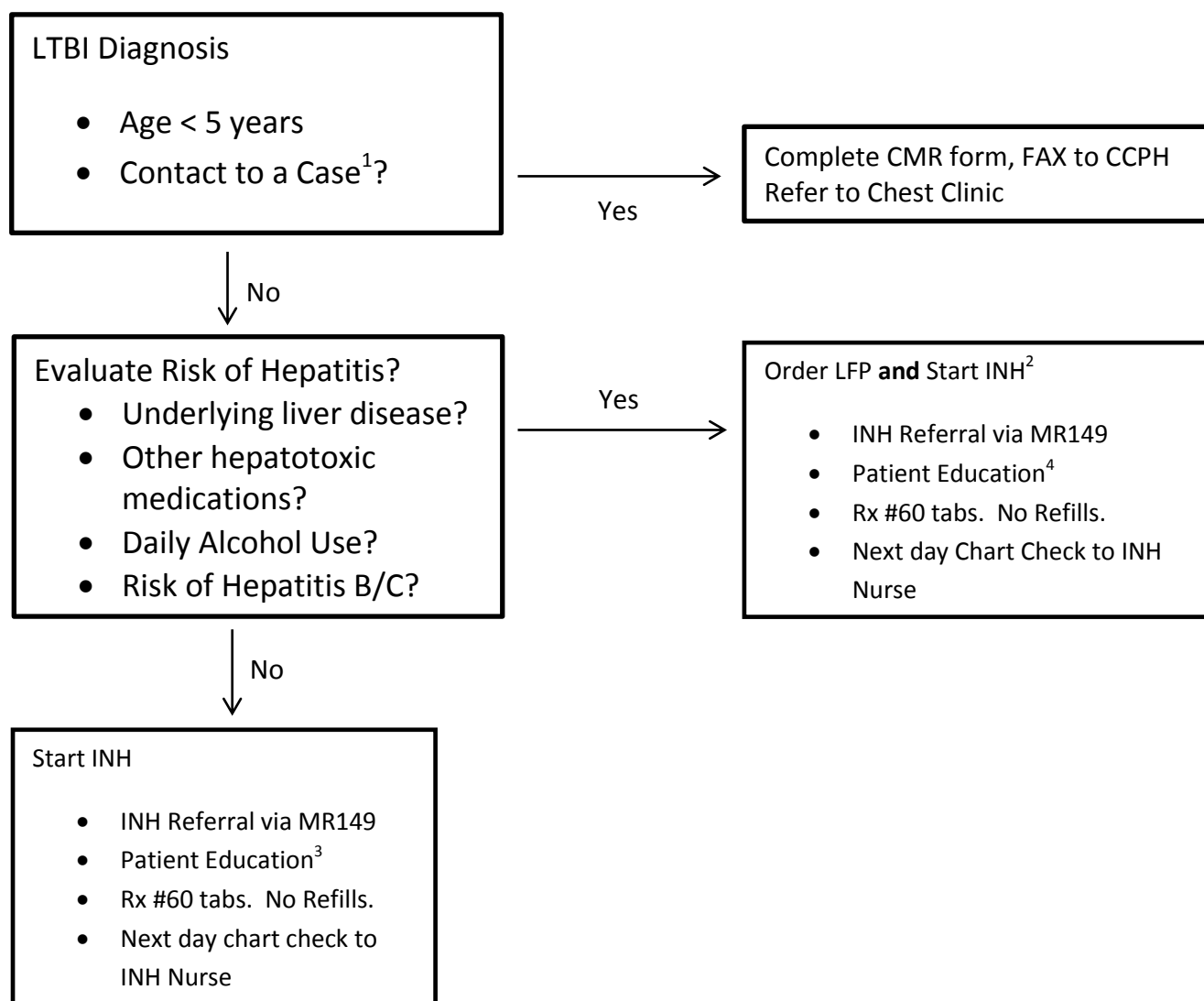


# INH Follow-up Algorithm



## Notes:

1. If history of recent TB contact, unless referred by CCPH as a recent contact, obtain name and contact information of suspected source case, call CCPH (925-313-6740) to verify status as recent contact to infectious TB suspect or case.
2. In general, you can start INH at the same time as ordering the LFP. The INH nurse will follow-up on the test results and hold therapy if needed. Consider consultation or referral to Chest Clinic if you are concerned.
3. "Tuberculosis" patient handout available in English and Spanish attached to MR149 form. Oral provider education should include the importance of stopping INH immediately and contacting INH Nurse or PHN if (s)he develops symptoms of possible ADRs.

Update 7/19/2011